

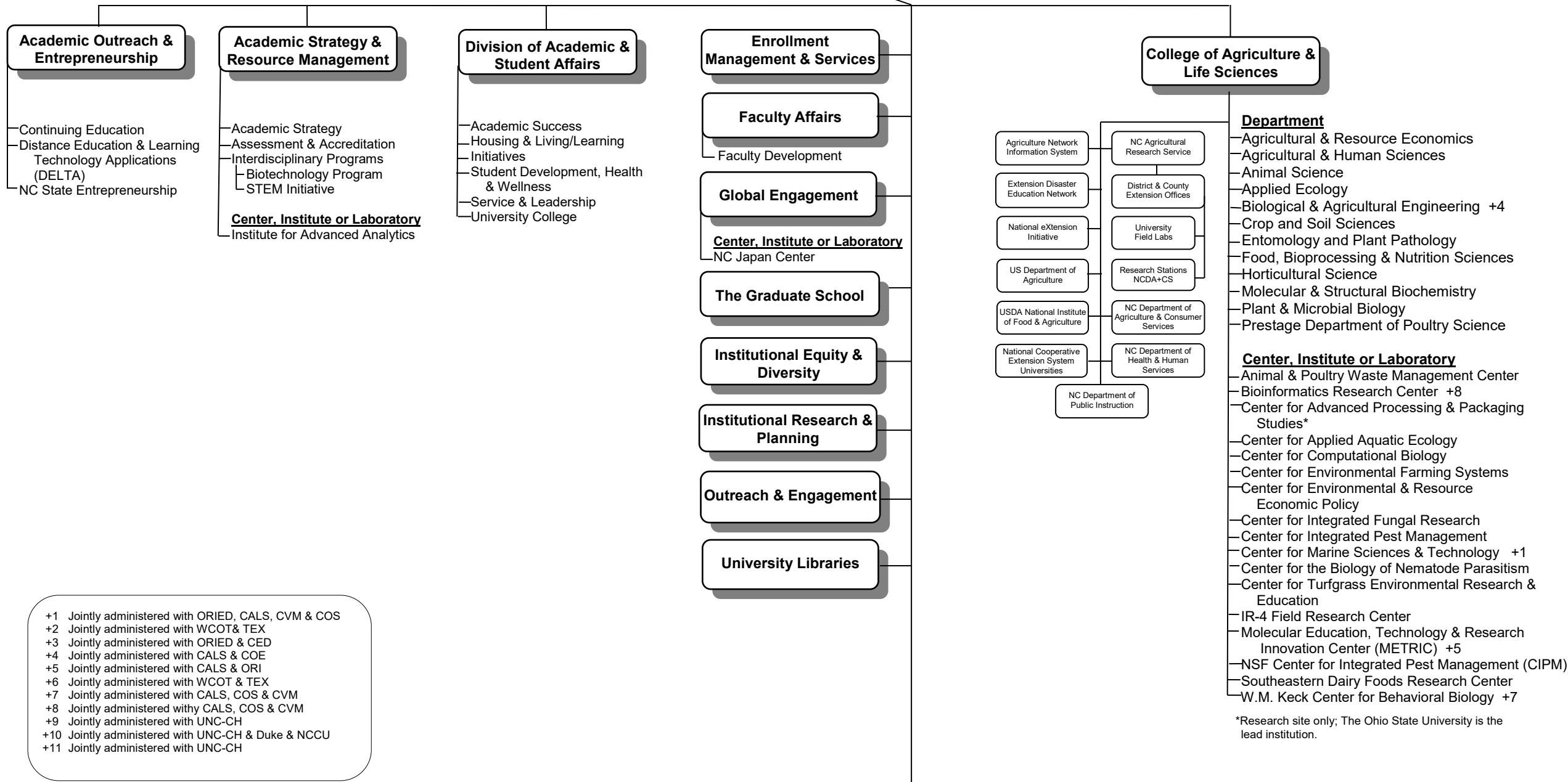
- Athletics
- Compliance, Enterprise Risk Management & Ethics
- Internal Audit
- Park Scholarships

- Center, Institute or Laboratory**
- Kenan Institute for Engineering, Technology & Science (KIETS)
  - Kenan Fellows Program for Teacher Leadership

- +1 Jointly administered with ORIED, CALS, CVM & COS
- +2 Jointly administered with WCOT & TEX
- +3 Jointly administered with ORIED & CED
- +4 Jointly administered with CALS & COE
- +5 Jointly administered with CALS & ORI
- +6 Jointly administered with WCOT & TEX
- +7 Jointly administered with CALS, COS & CVM
- +8 Jointly administered with CALS, COS & CVM
- +9 Jointly administered with UNC-CH
- +10 Jointly administered with UNC-CH & Duke & NCCU
- +11 Jointly administered with UNC-CH

a

a

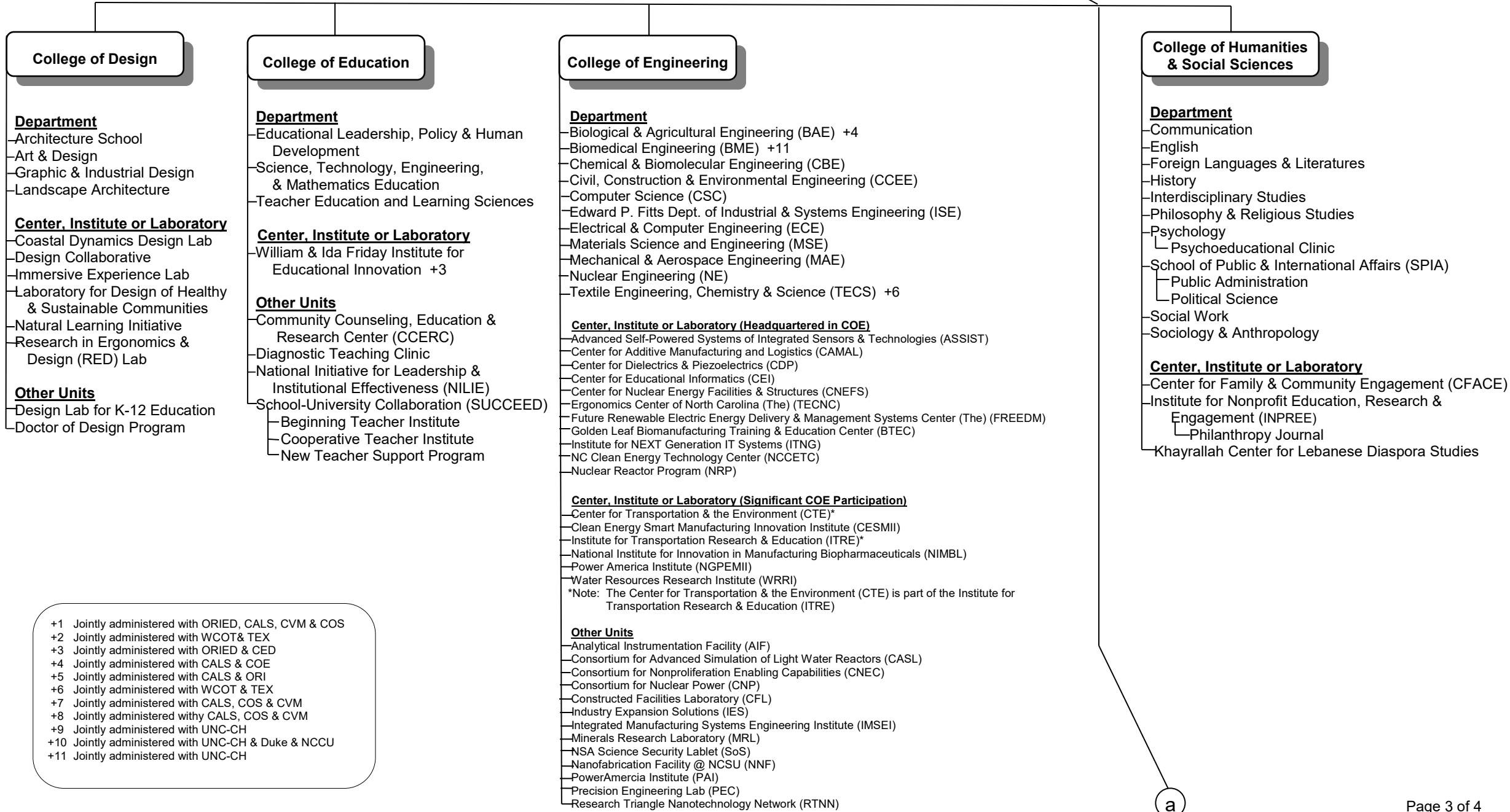


+1 Jointly administered with ORIED, CALS, CVM & COS  
 +2 Jointly administered with WCOT & TEX  
 +3 Jointly administered with ORIED & CED  
 +4 Jointly administered with CALS & COE  
 +5 Jointly administered with CALS & ORI  
 +6 Jointly administered with WCOT & TEX  
 +7 Jointly administered with CALS, COS & CVM  
 +8 Jointly administered with CALS, COS & CVM  
 +9 Jointly administered with UNC-CH  
 +10 Jointly administered with UNC-CH & Duke & NCCU  
 +11 Jointly administered with UNC-CH

\*Research site only; The Ohio State University is the lead institution.

a

a



**College of Design**

- Department**
- Architecture School
  - Art & Design
  - Graphic & Industrial Design
  - Landscape Architecture
- Center, Institute or Laboratory**
- Coastal Dynamics Design Lab
  - Design Collaborative
  - Immersive Experience Lab
  - Laboratory for Design of Healthy & Sustainable Communities
  - Natural Learning Initiative
  - Research in Ergonomics & Design (RED) Lab
- Other Units**
- Design Lab for K-12 Education
  - Doctor of Design Program

**College of Education**

- Department**
- Educational Leadership, Policy & Human Development
  - Science, Technology, Engineering, & Mathematics Education
  - Teacher Education and Learning Sciences
- Center, Institute or Laboratory**
- William & Ida Friday Institute for Educational Innovation +3
- Other Units**
- Community Counseling, Education & Research Center (CCERC)
  - Diagnostic Teaching Clinic
  - National Initiative for Leadership & Institutional Effectiveness (NILIE)
  - School-University Collaboration (SUCCEED)
    - Beginning Teacher Institute
    - Cooperative Teacher Institute
    - New Teacher Support Program

**College of Engineering**

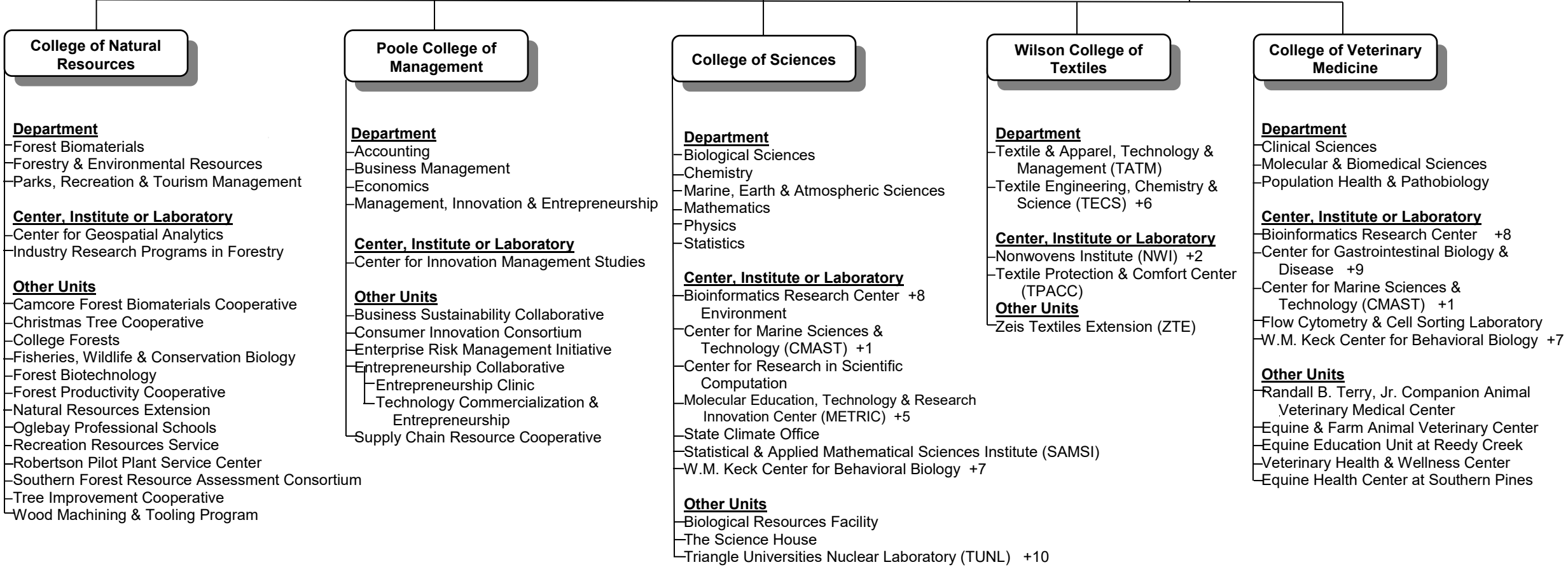
- Department**
- Biological & Agricultural Engineering (BAE) +4
  - Biomedical Engineering (BME) +11
  - Chemical & Biomolecular Engineering (CBE)
  - Civil, Construction & Environmental Engineering (CCEE)
  - Computer Science (CSC)
  - Edward P. Fitts Dept. of Industrial & Systems Engineering (ISE)
  - Electrical & Computer Engineering (ECE)
  - Materials Science and Engineering (MSE)
  - Mechanical & Aerospace Engineering (MAE)
  - Nuclear Engineering (NE)
  - Textile Engineering, Chemistry & Science (TECS) +6
- Center, Institute or Laboratory (Headquartered in COE)**
- Advanced Self-Powered Systems of Integrated Sensors & Technologies (ASSIST)
  - Center for Additive Manufacturing and Logistics (CAMAL)
  - Center for Dielectrics & Piezoelectrics (CDP)
  - Center for Educational Informatics (CEI)
  - Center for Nuclear Energy Facilities & Structures (CNEFS)
  - Ergonomics Center of North Carolina (The) (TECNC)
  - Future Renewable Electric Energy Delivery & Management Systems Center (The) (FREEDM)
  - Golden Leaf Biomanufacturing Training & Education Center (BTEC)
  - Institute for NEXT Generation IT Systems (ITNG)
  - NC Clean Energy Technology Center (NCCETC)
  - Nuclear Reactor Program (NRP)
- Center, Institute or Laboratory (Significant COE Participation)**
- Center for Transportation & the Environment (CTE)\*
  - Clean Energy Smart Manufacturing Innovation Institute (CESMII)
  - Institute for Transportation Research & Education (ITRE)\*
  - National Institute for Innovation in Manufacturing Biopharmaceuticals (NIMBL)
  - Power America Institute (NGPEMII)
  - Water Resources Research Institute (WRR)
- \*Note: The Center for Transportation & the Environment (CTE) is part of the Institute for Transportation Research & Education (ITRE)
- Other Units**
- Analytical Instrumentation Facility (AIF)
  - Consortium for Advanced Simulation of Light Water Reactors (CASL)
  - Consortium for Nonproliferation Enabling Capabilities (CNEC)
  - Consortium for Nuclear Power (CNP)
  - Constructed Facilities Laboratory (CFL)
  - Industry Expansion Solutions (IES)
  - Integrated Manufacturing Systems Engineering Institute (IMSEI)
  - Minerals Research Laboratory (MRL)
  - NSA Science Security Labellet (SoS)
  - Nanofabrication Facility @ NCSU (NNF)
  - PowerAmerica Institute (PAI)
  - Precision Engineering Lab (PEC)
  - Research Triangle Nanotechnology Network (RTNN)

**College of Humanities & Social Sciences**

- Department**
- Communication
  - English
  - Foreign Languages & Literatures
  - History
  - Interdisciplinary Studies
  - Philosophy & Religious Studies
  - Psychology
    - Psychoeducational Clinic
  - School of Public & International Affairs (SPIA)
    - Public Administration
    - Political Science
  - Social Work
  - Sociology & Anthropology
- Center, Institute or Laboratory**
- Center for Family & Community Engagement (CFACE)
  - Institute for Nonprofit Education, Research & Engagement (INPREE)
    - Philanthropy Journal
  - Khayrallah Center for Lebanese Diaspora Studies

+1 Jointly administered with ORIED, CALS, CVM & COS  
 +2 Jointly administered with WCOT & TEX  
 +3 Jointly administered with ORIED & CED  
 +4 Jointly administered with CALS & COE  
 +5 Jointly administered with CALS & ORI  
 +6 Jointly administered with WCOT & TEX  
 +7 Jointly administered with CALS, COS & CVM  
 +8 Jointly administered with CALS, COS & CVM  
 +9 Jointly administered with UNC-CH  
 +10 Jointly administered with UNC-CH & Duke & NCCU  
 +11 Jointly administered with UNC-CH

a



+1 Jointly administered with ORIED, CALS, CVM & COS  
 +2 Jointly administered with WCOT & TEX  
 +3 Jointly administered with ORIED & CED  
 +4 Jointly administered with CALS & COE  
 +5 Jointly administered with CALS & ORI  
 +6 Jointly administered with WCOT & TEX  
 +7 Jointly administered with CALS, COS & CVM  
 +8 Jointly administered withy CALS, COS & CVM  
 +9 Jointly administered with UNC-CH  
 +10 Jointly administered with UNC-CH & Duke & NCCU  
 +11 Jointly administered with UNC-CH